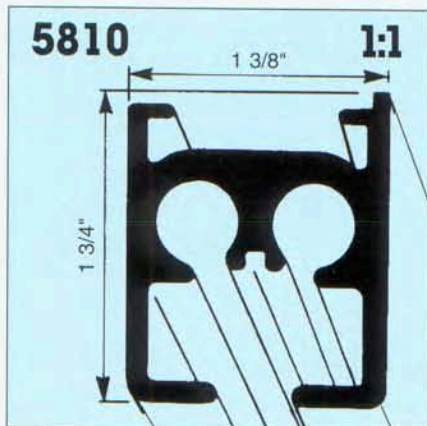


# Heavy Duty/Stage Cord Drawn Curtain Track System Silent Gliss® 5850



## Product Information

- #5850 is a heavy duty and stage cord drawn drapery track system
- Suitable for high or especially heavy draperies
- Small inconspicuous profile with internal cord channels
- Lengths up to 100'
- Maximum drapery weight 300 lbs.
- Pinch pleat or box pleat draperies
- Ceiling mount or suspended
- Curvable on both inside and outside radii, minimum radius 20"
- Ideal for theaters, auditoriums, television studios, stages, schools, ballrooms, churches
- 5 year warranty

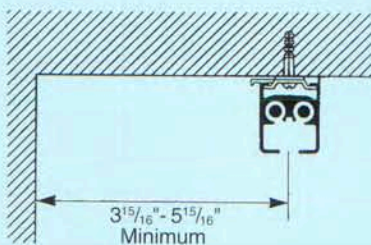
## Bending & Stacking Possibilities



Min. radius R  
5810 = 20"

## Installation

Ceiling mount with bracket #3603

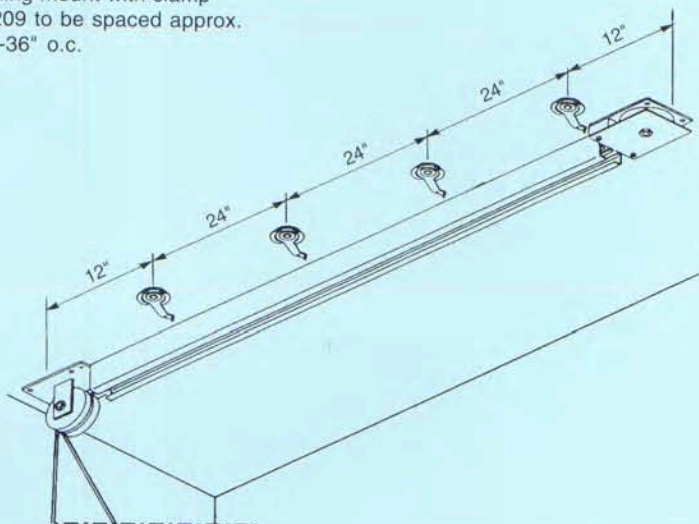


Suspended Mount



Suspended by chain or cable to eyelet bolt #5824, spaced approx. 36"-46" o.c.

Ceiling mount with clamp #6209 to be spaced approx. 24"-36" o.c.



## Standard Components



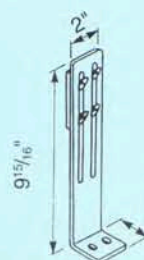
5816  
Cord  
Guide



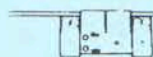
5815  
Cord Guide  
Return



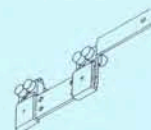
6070  
Cord



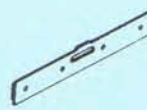
6578  
Floor  
Plate



5806  
Pilot



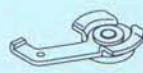
5811  
Overlap  
Arm



6203  
Connecting  
Bridge



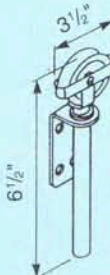
5824  
Eyelet  
Bolt



6209  
Clamp



5809  
Roller



6575  
Cord  
Tensioner

