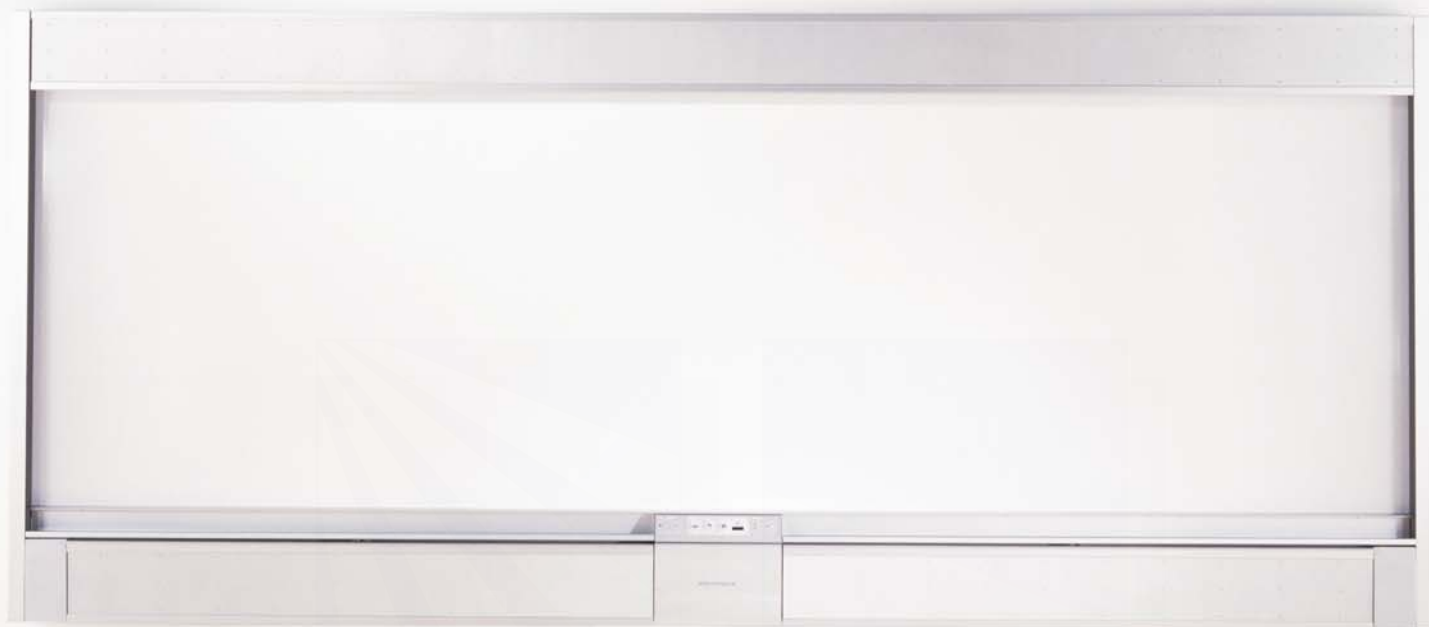


IMPULSE™ LTX

Multimedia Whiteboard System





A visual communication system that transforms the way people learn and work

IMPULSE™ LTX

Multimedia Whiteboard System

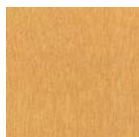
THE INDUSTRY'S FIRST MULTIMEDIA WHITEBOARD WITH WALK-UP-AND-USE SIMPLICITY.

Experience the advantages of the Impulse LTX System:

- Intuitive use ... literally walk up and start writing; the board senses the touch of the marker and powers itself on. Instinctively project, write, annotate, capture, and recall your notes.
- Panoramic size with high-performance P³ ceramicsteel™ surface ... allows for free-flowing ideas with enhanced visibility on a surface that is warranted for a lifetime. Available sizes: 4'x8', 4'x12', 5'x8', and 5'x12'.
- Built-in intelligence ... Simple, one-touch buttons enable effortless navigation of the system. No training, no computer, no complicated software, and no pre-meeting setup required; just start writing.



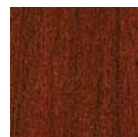
Winter on Maple
770-0249-00 (EC)
770-0250-00 (PI)
-3582



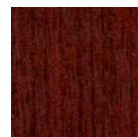
Amber on Maple
770-0228-00 (EC)
770-0233-00 (PI)
-3572



Natural Cherry
770-0229-00 (EC)
770-0234-00 (PI)
-3412



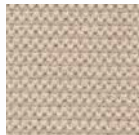
Medium Cherry
770-0230-00 (EC)
770-0235-00 (PI)
-3422



Medium Mahogany
770-0227-00 (EC)
770-0232-00 (PI)
-3772



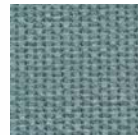
Natural Cork
770-0236-00 (PI)



Tundra Camel P370
770-0251-00 (PI)
-P370



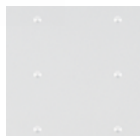
Tundra Lichen P376
770-0237-00 (PI)
-P376



Tundra Midnight P375
770-0311-00 (PI)
-P375



Clear Anodized Aluminum
770-0231-00 (EC)



Dimpled Anodized Aluminum
770-0239-00 (PI)
-D4-4799

Materials & Finishes

The wood and aluminum finishes are available for both the end caps (EC) and panel inserts (PI). Fabric and cork finishes are available for the panel inserts only.

Custom Materials & Finishes

- Embroider your school or corporate logo onto fabric
- Customer's own material (COM) option

- Matches Steelcase surface number

POLYVISION™
A Steelcase Company

PolyVision Corporation
4888 S. Old Peachtree Rd.
Norcross, GA 30071
1.800.620.POLY
www.polyvision.com

PolyVision, N.V.
Zuidering 56
3600 Genk, Belgium
+32 (0)89.32.31.30

©2003 PolyVision Corporation. All rights reserved. "Impulse" is a trademark of PolyVision Corporation.

PL1_IMPULSE_1202 02-0003124