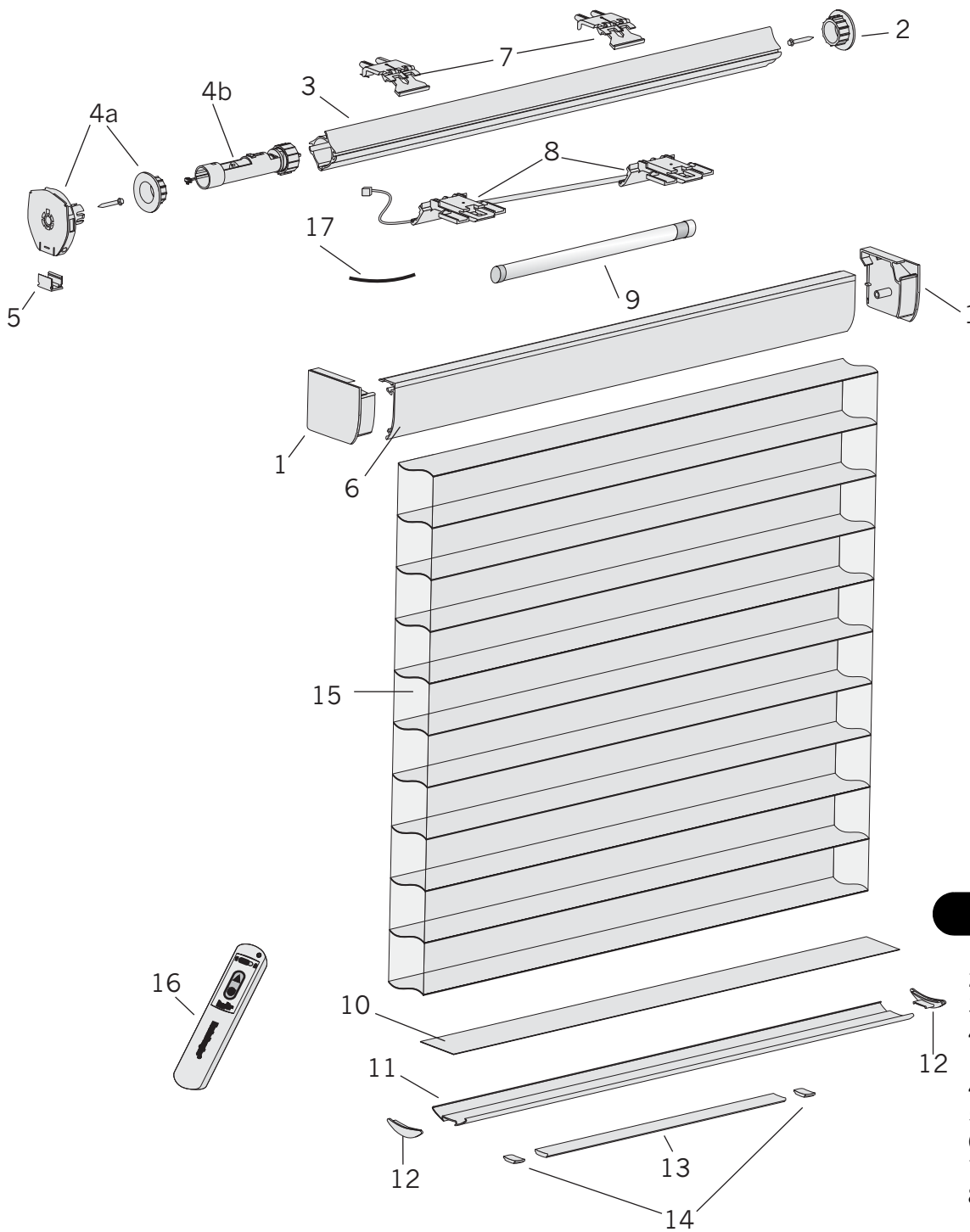


Silhouette® with PowerRise®*



Standard Parts

1. Headrail End Caps
2. Rotator
3. Rotator Rail
- 4a. Electronic Cartridge Assembly
- 4b. Motor Housing
5. Switch Cover
6. Headrail
7. Limit Assemblies
8. Battery Bracket Assembly
9. Battery Wand
10. Bottom Slat
11. Bottom Rail
12. Bottom Rail End Caps
13. Balance Weight
14. Weight Clips
15. Fabric
16. Remote Control
17. Rubber Spline

* On RRO3 System

Silhouette® with PowerRise®*

No.	PCN	Description	No.	PCN	Description
1.	4170020xxx	Headrail End Caps – Oversized (Not Shown)	9.	N/A	Battery Wand – Standard – Inside Mount Only (For Outside Mount Use Battery Pack)
	4150060xxx	Headrail End Caps – Standard		2981163000	AAA Battery Wand
2.	4150119000	Rotator		2981097000	AA Battery Wand
	4150158000	Screw (Rotator)	10.	4150144xxx	Bottom Slat – A1, A2, A4, A5, A7, A8 & A11 Fabrics
3.	4170030785	Rotator Rail – Oversized (Not Shown)		4150153xxx	Bottom Slat – A3 & A6 Fabrics
	4150187785	Rotator Rail – Standard		4150365xxx	Bottom Slat – A12 Fabric
4a.	N/A	Electronic Cartridge Assembly		4150366xxx	Bottom Slat – A13 Fabric
	4153553000	Left	11.	4150128xxx	Bottom Rail
	4153554000	Right	12.	4150084xxx	Bottom Rail End Caps
4b.	N/A	Motor Housing	13.	4150082xxx	Balance Weight (Bottom Rail Weight)
	4153551000	Left	14.	4150083xxx	Weight Clips
	4153550000	Right	15.	N/A	Fabrics A1, A2, A3, A4, A5, A6, A7, A8, A11, A12 & A13
5.	4150247000	Switch Cover	16.	2981195000	Remote Control (Must be indicated on order)
6.	4170010xxx	Headrail – Oversized (Not Shown)	17.	4150238000	Rubber Spline
	4150010xxx	Headrail – Standard	18.	4150154785	Polystrip With Tape (Not Shown)
7.	4170050885	Limit Assemblies – Oversized (Not Shown)			
	4150050885	Limit Assemblies – Standard			
8.	N/A	Battery Mounting Bracket Assembly (AA or AAA)			

Additional Standard Hardware Needed (Dependent upon choice of Inside or Outside Mount):

4153568000	Satellite Eye 20" Wire
4153569000	Satellite Eye 4' Wire
4153570000	Satellite Eye 8' Wire
4153571000	Satellite Battery Pack 15" Wire
4153572000	Satellite Battery Pack 4' Wire
4153573000	Satellite Battery Pack 8' Wire
4254016000	16' Transformer
4254025000	25' Transformer

Additional Hardware:

(For pictures & specifics, see Silhouette® with PowerRise® & Motorized Additional Hardware)

4150241000	Quick Release Installation Bracket
4150121000	Quick Release Installation Bracket Screws
4150104000	2-Pack Quick Installation Brackets with Screws
4150105000	3-Pack Quick Release Installation Brackets with Screws

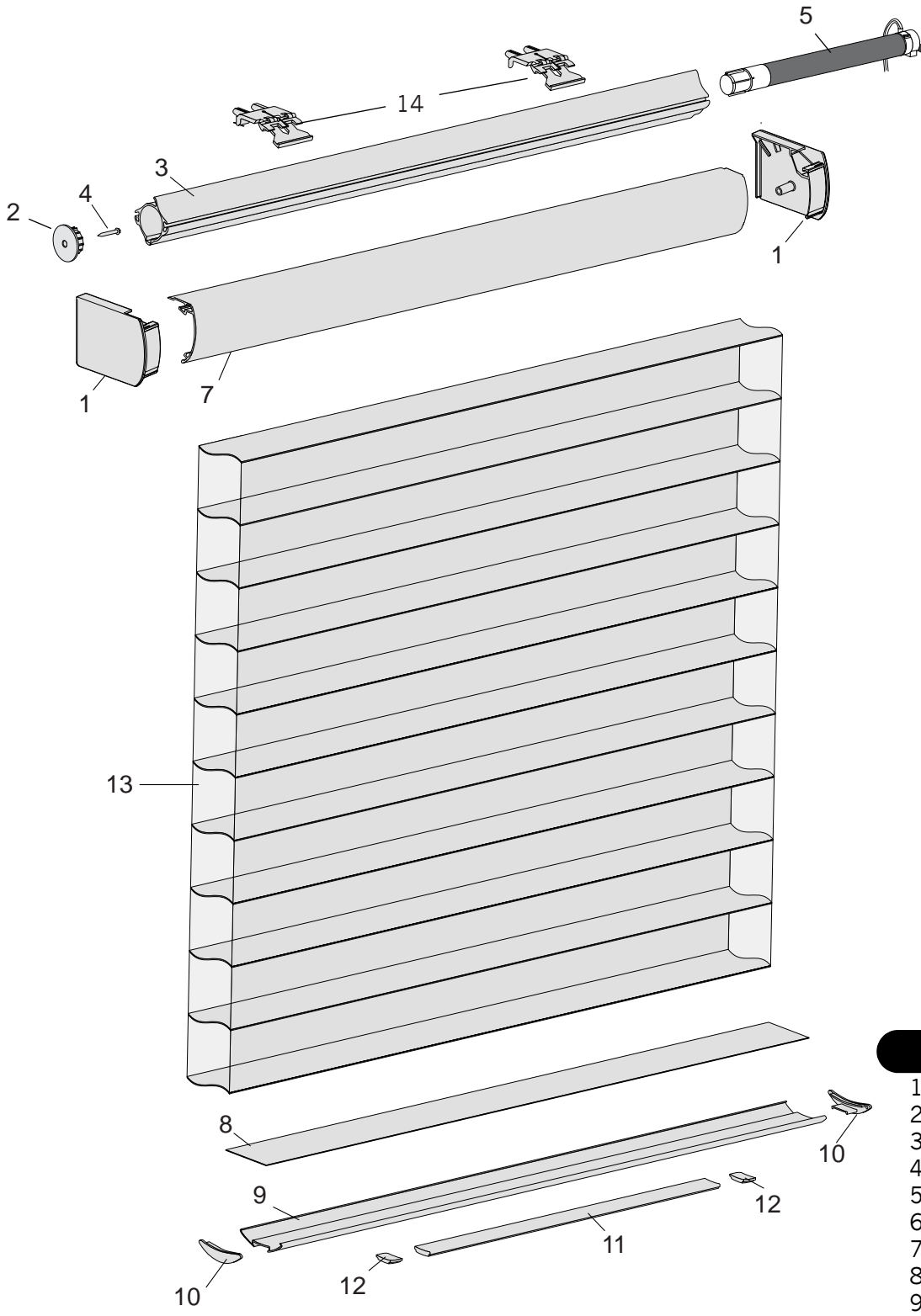
Optional Hardware:

2930230000	Spacer Block
2930340000	Extension Bracket
4150149000	Back Cover
4150256000	Back Cover Bracket
4150070785	Dust Cover
4150106000	Top Mount Bracket Kit

xxx = 3-digit color code

* On RRO3 System

Silhouette® Motorized*



* On RRO3 System

Standard Parts

- 1. Headrail End Caps
- 2. Rotator
- 3. Rotator Rail
- 4. Screw (Rotator)
- 5. 12V DC Motor Assembly
- 6. Screw (Motor - Not Shown)
- 7. Headrail
- 8. Bottom Slat
- 9. Bottom Rail
- 10. Bottom Rail End Caps
- 11. Bottom Rail Weight
- 12. Weight Clips
- 13. Fabric
- 14. Limit Assemblies

Silhouette® Motorized*

No.	PCN	Description
1.	4150060xxx 4170020xxx	Headrail End Cap – Standard (Not Shown) Headrail End Cap – Oversized
2.	4150119000	Rotator
3.	4150187785 4170030785	Rotator Rail – Standard (Not Shown) Rotator Rail – Oversized
4.	4150158000	Screw (Rotator)
5.	N/A	12V DC Motor Assembly
6.	4150121000	Screw (Motor – Not Shown)
7.	4150010xxx 4170010xxx	Headrail – Standard (Not Shown) Headrail – Oversized
8.	4150144xxx 4150153xxx 4150365xxx 4150366xxx	Bottom Slat – A1, A2, A4, A5, A7, A8 & A11 Fabrics Bottom Slat – A3 & A6 Fabrics Bottom Slat – A12 Fabric Bottom Slat – A13 Fabric
9.	4150128xxx	Bottom Rail
10.	4150084xxx	Bottom Rail End Caps
11.	4150082xxx	Bottom Rail Weight
12.	4150083xxx	Weight Clips
13.	N/A	Fabrics – A1, A2, A3, A4, A5, A6, A7, A8, A11, A12 & A13
14.	4150050885 4170050885	Limit Assembly – Standard Limit Assembly – Oversized
15.	4150154785	Polystrip With Tape (Not Shown)

Additional Standard Hardware Needed (Dependent upon choice of Remote or Switch):

Remote:

2951118000	Remote Transmitter
2950702000	Remote Receiver
2951111000	Remote Control Unit
2950723000	12V – 2 Amp Power Supply
2950724000	12V – 8 Amp Power Supply

Switch:

2980248000	Master Wall Switch
2950723000	12V – 2 Amp Power Supply
2950724000	12V – 8 Amp Power Supply

Additional Hardware:

(For pictures & specifics, see Silhouette® with PowerRise® & Motorized Additional Hardware)

4150241000	Quick Release Installation Bracket
4150121000	Quick Release Installation Bracket Screws
4150104000	2-Pack Quick Release Installation Bracket with Screws
4150105000	3-Pack Quick Release Installation Bracket with Screws

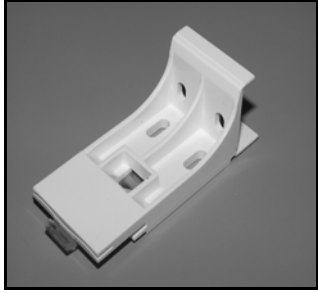
Optional Hardware:

2930230000	Spacer Block
2930340000	Extension Bracket
4150103000	Hold-Down Bracket
4150149000	Back Cover
4150256000	Back Cover Bracket
4150070785	Dust Cover

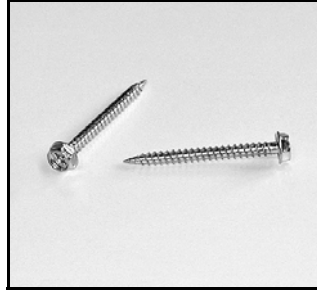
xxx = 3-digit color code

* On RRO3 System

Silhouette® with PowerRise® & Motorized Additional Hardware



Quick Release
Installation Bracket
PCN 4150241000



Quick Release
Installation Bracket Screws
PCN 4150121000

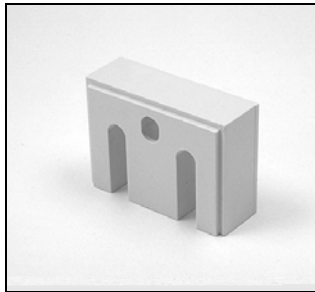


Quick Release
Installation Brackets - 2 Pack
PCN 4150104000

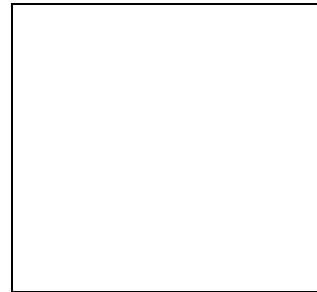


Quick Release
Installation Brackets - 3 Pack
PCN 4150105000

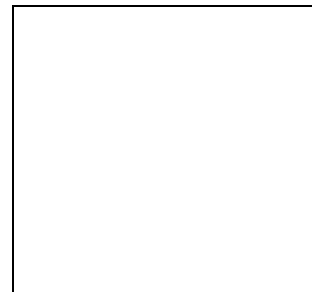
Optional Hardware



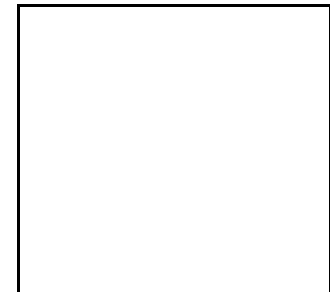
Spacer Block
PCN 2930230000



Extension Bracket
PCN 2930340000



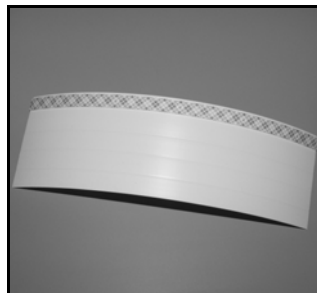
Hold-Down Bracket
PCN 4150103000



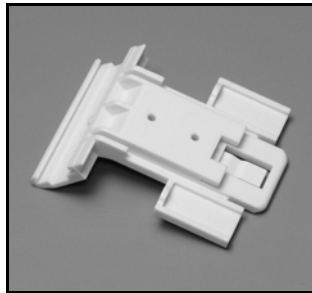
Back Cover
PCN 4150149000



Back Cover Bracket
PCN 4150256000



Dust Cover
PCN 4150070785



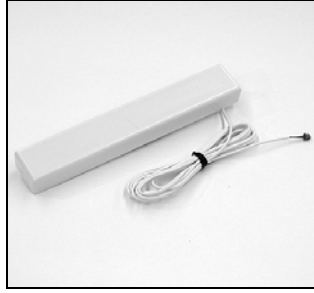
Top Mount Bracket Kit - 2 per pkg.
PCN 4150106000

Silhouette® with PowerRise® & Motorized Additional Hardware



Satellite Eye

Satellite Eye - 20' Wire
PCN 4153568000
Satellite Eye - 4' Wire
PCN 4153569000
Satellite Eye - 8' Wire
PCN 4153570000



Satellite Battery Pack
Standard - Outside Mount
Optional - Inside Mount

Satellite Battery Pack - 15" Wire
PCN 4153571000
Satellite Battery Pack - 4' Wire
PCN 4153572000
Satellite Battery Pack - 8' Wire
PCN 4153573000



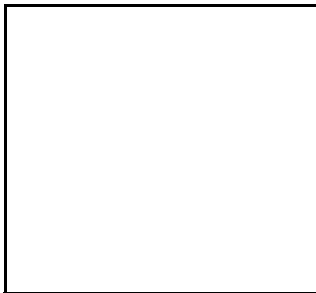
Battery Wand
Standard - Inside Mount Only

AAA Battery Wand
PCN 2981163000
AA Battery Wand
PCN 2981097000



AC Transformer - 16' Wire
PCN 4254016000

AC Transformer - 25' Wire
PCN 4254025000



AAA Batteries
PCN 2981087000



AA Batteries
PCN 2981154000



Remote Transmitter
PCN 2981195000



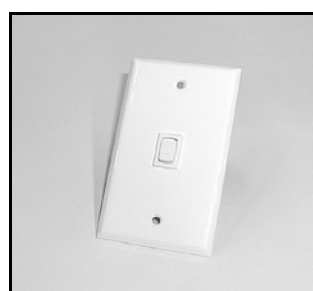
Optional Universal Remote
PCN 2951118000



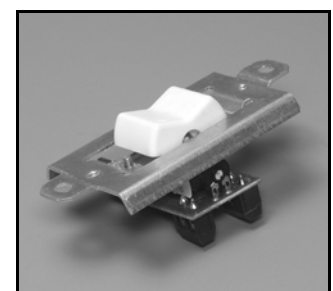
Remote Receiver
PCN 2950702000



Control Unit Line Connector
PCN 2950717000



Master Wall Switch
PCN 2950710000
Master Wall Switch Kit
PCN 2980248000



5 Position Rocker Wall Switch
PCN 4150116000

Silhouette® with PowerRise® & Motorized Additional Hardware



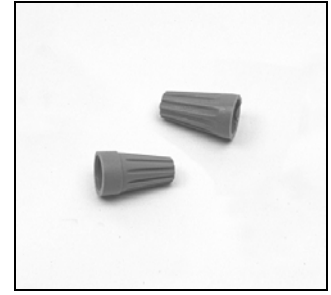
Remote & Switch
Power Supply - 12V 2-Amp
PCN 2950723000



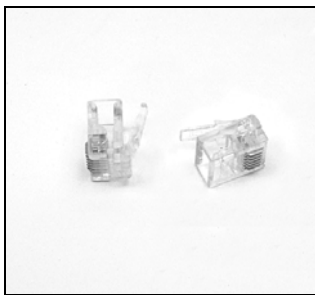
Remote & Switch
Power Supply - 12V 8-Amp
PCN 2950724000



Remote Control Unit
PCN 2951111000



Wire Nuts (gray)
PCN 2950816000



Signal Line Connectors
PCN 2950709000



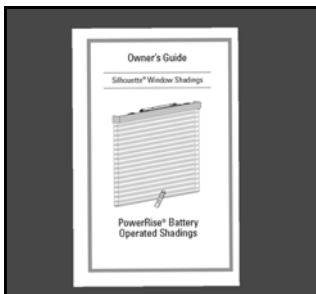
Signal Line Crimp Tool
PCN 2950714000



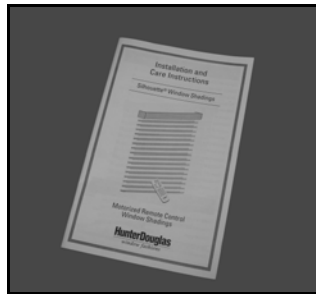
Signal Line - 50 ft.
PCN 2950708000



Shade Wire - 50 ft.
PCN 2950711000



Silhouette® PowerRise®
Installation Instructions
PCN 5108023000



Silhouette® Motorized Remote
Installation Instructions
PCN 5101347000



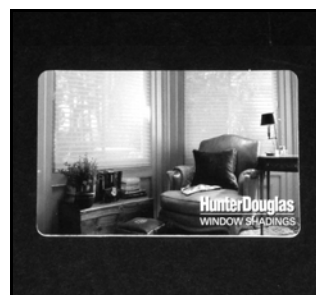
Silhouette® Motorized Switch
Installation Instructions
PCN 5101332000



About Silhouette®
PCN 5107117000



Silhouette® with PowerRise
Care & Maintenance Video
PCN 5107020000



Silhouette® Quick Release Card
PCN 5108276000



Silhouette® Adjustment Tool
PCN 5102079000



Hunter Douglas Warranty
Registration Card
PCN 7107622000